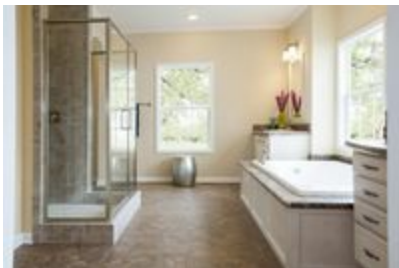




# 2483 66X32 CK3+2 HERITAGE MOD



## 2483 66X32 CK3+2 HERITAGE MOD

Model number: 58FRE32663EM17

3 beds • 2 baths • 2112 sq.ft. • 32' width • 66' depth

Our home building facilities invest in continuous product and process improvements. Plans, dimensions, features, materials, specifications and availability are subject to change without notice or obligation. Renderings and floor plans are representative likenesses of our homes and may differ from the actual homes. We invite you to tour a Home Center near you and inspect the highest value in quality housing available or call (864) 503-9395 to speak with a Home Consultant. Copyright 2017, CMH. All rights reserved.

<https://www.claytonhomesofspartanburg.com>

### CLAYTON HOMES- SPARTANBURG

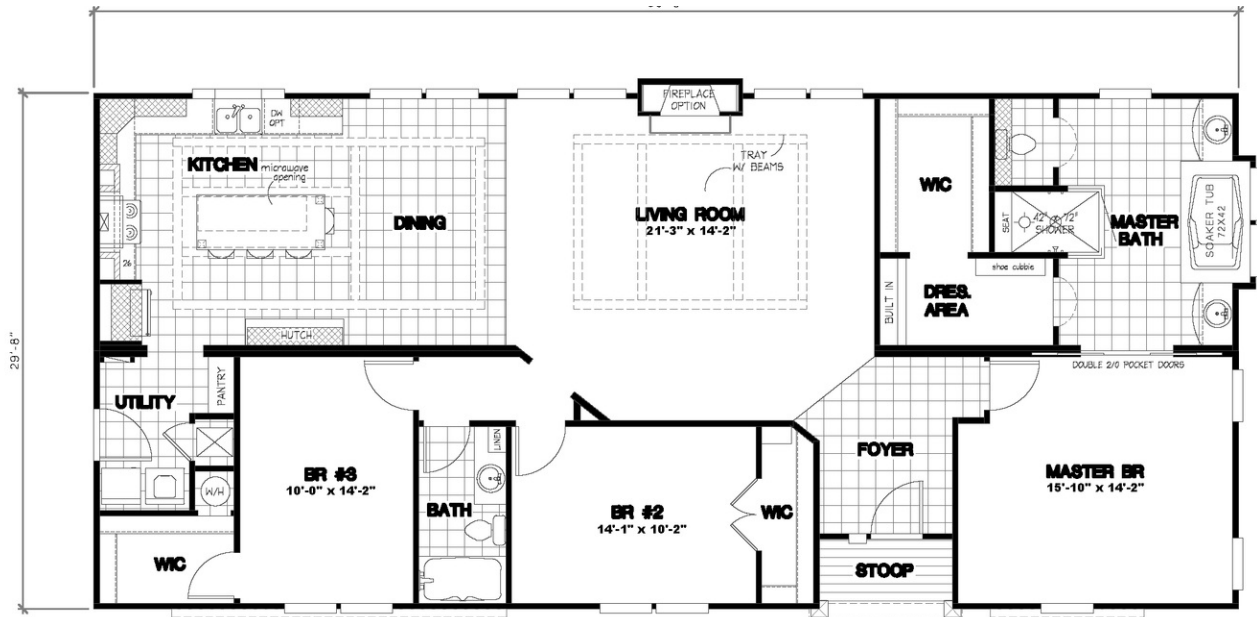
7403 ASHEVILLE HWY  
SPARTANBURG, SC 29303

Monday - Thursday: 9am - 7pm  
Friday: 9am - 6pm  
Saturday: 9am - 5pm  
Sunday: Closed

(864) 503-9395



# 2483 66X32 CK3+2 HERITAGE MOD



HUD 2063 / MOD 2483

## 2483 66X32 CK3+2 HERITAGE MOD

Model number: 58FRE32663EM17

3 beds • 2 baths • 2112 sq.ft. • 32' width • 66' depth

Our home building facilities invest in continuous product and process improvements. Plans, dimensions, features, materials, specifications and availability are subject to change without notice or obligation. Renderings and floor plans are representative likenesses of our homes and may differ from the actual homes. We invite you to tour a Home Center near you and inspect the highest value in quality housing available or call (864) 503-9395 to speak with a Home Consultant. Copyright 2017, CMH. All rights reserved.

<https://www.claytonhomesofspartanburg.com>

### CLAYTON HOMES- SPARTANBURG

7403 ASHEVILLE HWY  
SPARTANBURG, SC 29303

Monday - Thursday: 9am - 7pm  
Friday: 9am - 6pm  
Saturday: 9am - 5pm  
Sunday: Closed

(864) 503-9395